

53/111

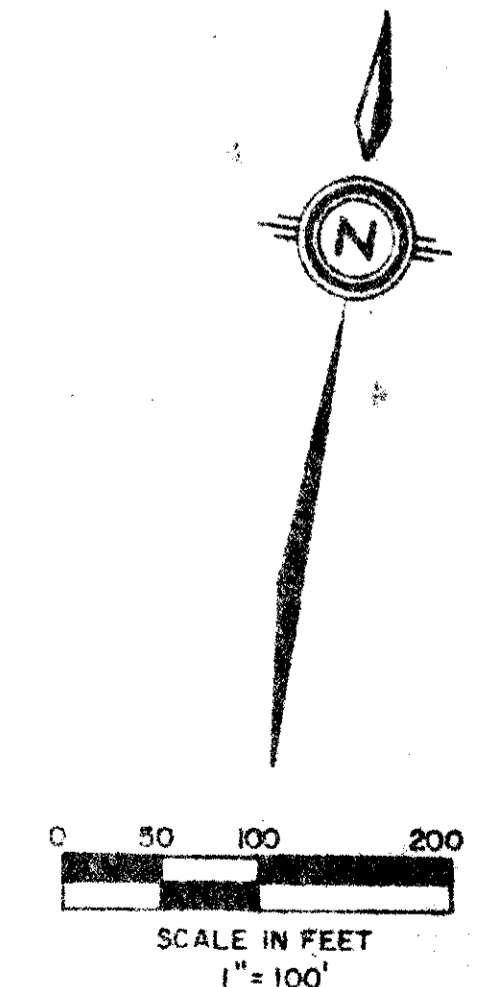
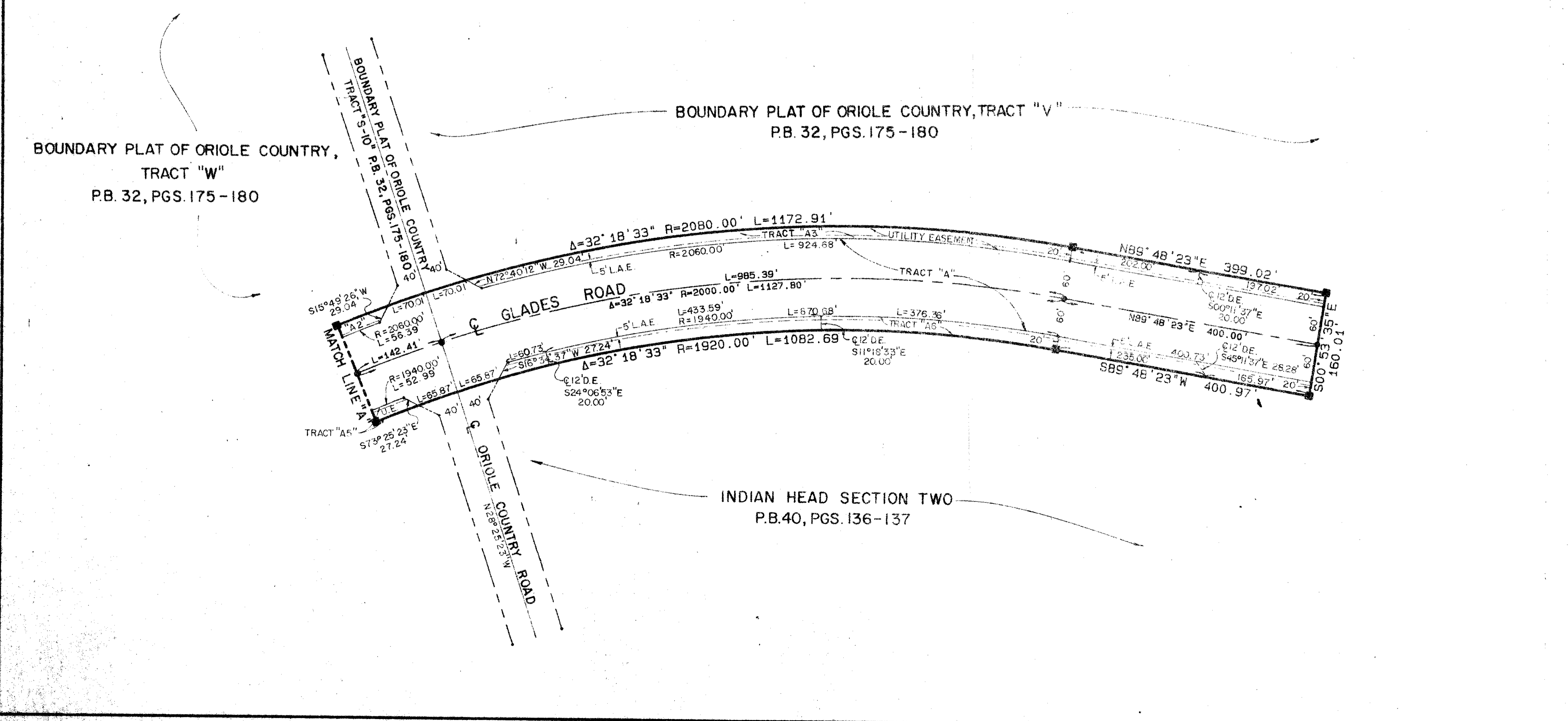
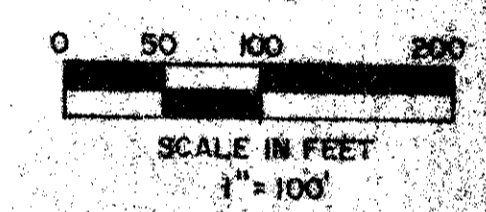
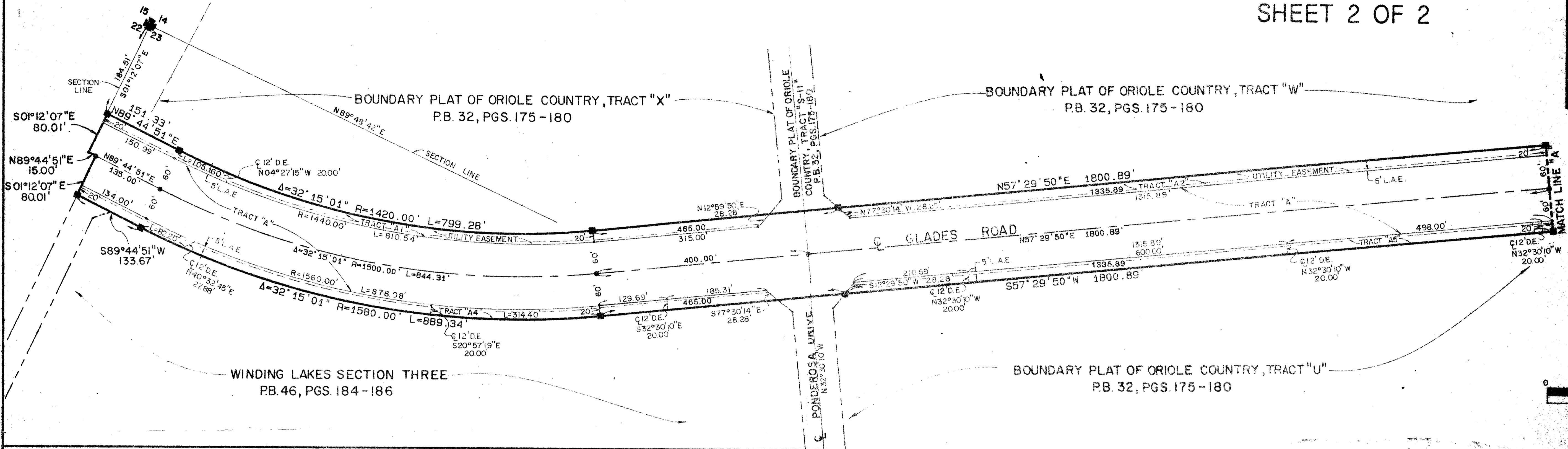
111

PLAT OF GLADES ROAD

PART OF LOGGERS' RUN, A P.U.D.
SITUATE IN SECTIONS 14 & 23, TOWNSHIP 47 SOUTH, RANGE 41 EAST,
PALM BEACH COUNTY, FLORIDA, BEING A REPLAT OF A PORTION OF
"BOUNDARY PLAT OF ORIOLE COUNTRY", (P.B. 32, PAGES 175-180).

SHEET 2 OF 2

STATE OF FLORIDA
COUNTY OF PALM BEACH
THIS PLAT WAS FILED FOR
RECORD AT _____ DAY OF _____
A.D. 1986 AND DULY RECORDED
IN PLAT BOOK _____ ON PAGES
AND _____
JOHN B. DUNKLE, CLERK
CIRCUIT COURT
BY: _____ D.C.



53
111E

Meridian Surveying and mapping Inc. WEST PALM BEACH, FLORIDA

DRAWN	M.E.H.	DATE	MAY, 1984
CHECKED		SCALE	1"=100'
DRAWING NO.	84-P-004-2		

PLAT OF GLADES ROAD
PART OF LOGGERS' RUN, A P.U.D.

DRAWING NUMBER

DRAWING NUMBER

DRAWING NUMBER

PLAN HOLD CORPORATION • IRVINE, CALIFORNIA
REORDER BY NUMBER 0754R

PLAN HOLD CORPORATION • IRVINE, CALIFORNIA
REORDER BY NUMBER 0754R

PLAN HOLD CORPORATION • IRVINE, CALIFORNIA
REORDER BY NUMBER 0754R